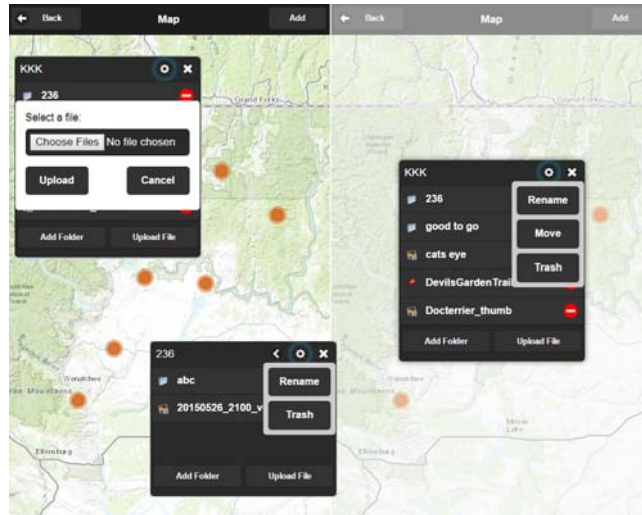


Case Study: Port of Douglas County, WA, USA

Port Operations



The Port of Douglas County (Port) has been having issues with managing all their documents by businesses, customers, projects and project sites in an efficient manner so that any document can be accessed by Port of its customers as and when needed. The Port made an attempt earlier to build a desktop based application for managing their documents. The application turned out to be immensely user unfriendly to the point that it cannot be used at all. The port lost a lot of time, money and efforts in that endeavor. Later, the Port met us and expressed their need for document management. They also expressed the need to manage documents spatially on a map interface instead of a dumb tabular interface. Another major need specifically expressed was the use of mobile devices so that documents can be searched and reviewed in meetings without any meeting preparation time or taking a large number of print out just for that meeting.

We had the exact product the Port was looking for. Our “Docterrier” content and document management system is mobile GIS based, and works on any mobile device while it can also be extended to desktops for using on computers and laptops. Users are managed through role based authentication, and can get access to different features and modules based on their role. Sites, locations, projects, clients etc. can be created as dropped pins on a spatial interface and documents can be geo-tagged and geo-managed according to site locations. We support pdf, png, jpeg etc. file types. This has successfully cut down the burdens of the Port staff to answer questions from citizens and Port customers. Now, anyone with access can search and find appropriate documents instead of calling or emailing Port staff. This has also made Port meetings a lot more productive as there is minimal meeting preparation time now. Participants can search and find required documents right on their mobile device during meetings and make decisions

as needed without waiting on anyone else to provide documents for review.

The Port operates on a Microsoft environment, and is subscribing to our document management mobile and web app on our cloud as SaaS (Software as a Service). The Port has no GIS and is consuming our GIS for their spatial needs. This means that the Port is using GIS without investing in GIS software at all; it comes bundled with our infrastructure. Multiple web services (including .NET web services) were developed and deployed on a Service Oriented Architecture (SOA) in conjunction with native Android and iOS codes to support both platforms and devices for the Port. Our mobile apps support cross platform needs including BYOD (Bring Your Own Device) policy across Android, iOS and Microsoft mobile platform and hardware. Project reference will be provided on request.

Product Highlights

- **Aktivov Modules:**
User Management
Manage Sites and Documents
- Mobile app architecture based leveraging mobile OS & hardware
- Authenticated Role based Access to modules and functions
- Subscribe as SaaS or install on your infrastructure
- ESRI or Open Source GIS
- Android, iOS, Windows platform support
- Connected and Disconnected modes of operation
- Modular Pricing – pay for features you use



Aakavs Consulting

24919 SE 41st Dr Phone: +1.425.245.3569
Issaquah, WA 98029, USA E-mail: arnab@aaakavs.com

